

Cradle Beach Bus Pick Up / Drop off

Bus Pick Up / Drop off Location:

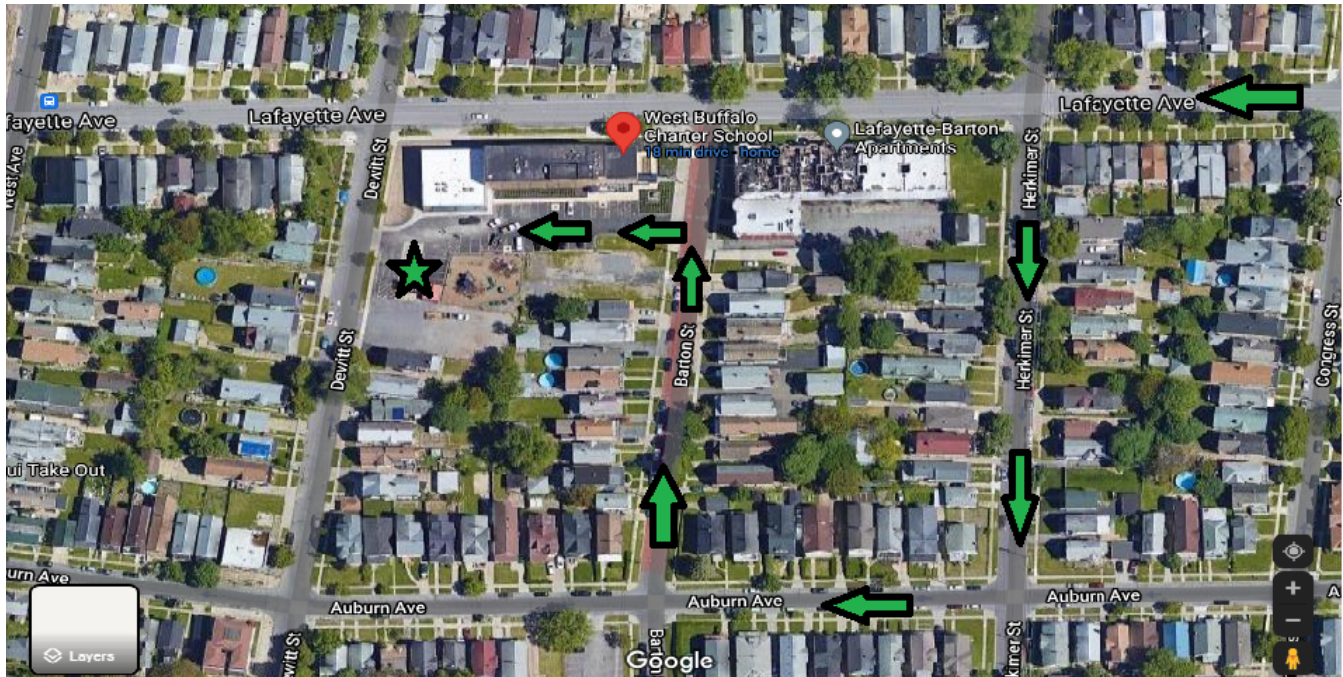
West Buffalo Charter School

113 Lafayette Ave., Buffalo, NY 14213

Drop Off Time: 9:00 AM

Pick Up Time: 5:00 PM

Located on Lafayette between Grant St. and Niagara St. Please use Barton St. entrance to the parking lot. Traffic flow pattern for pick up and drop off campers is marked on map below.



PLEASE Bring Photo ID & Pin Number to drop off and pick up.

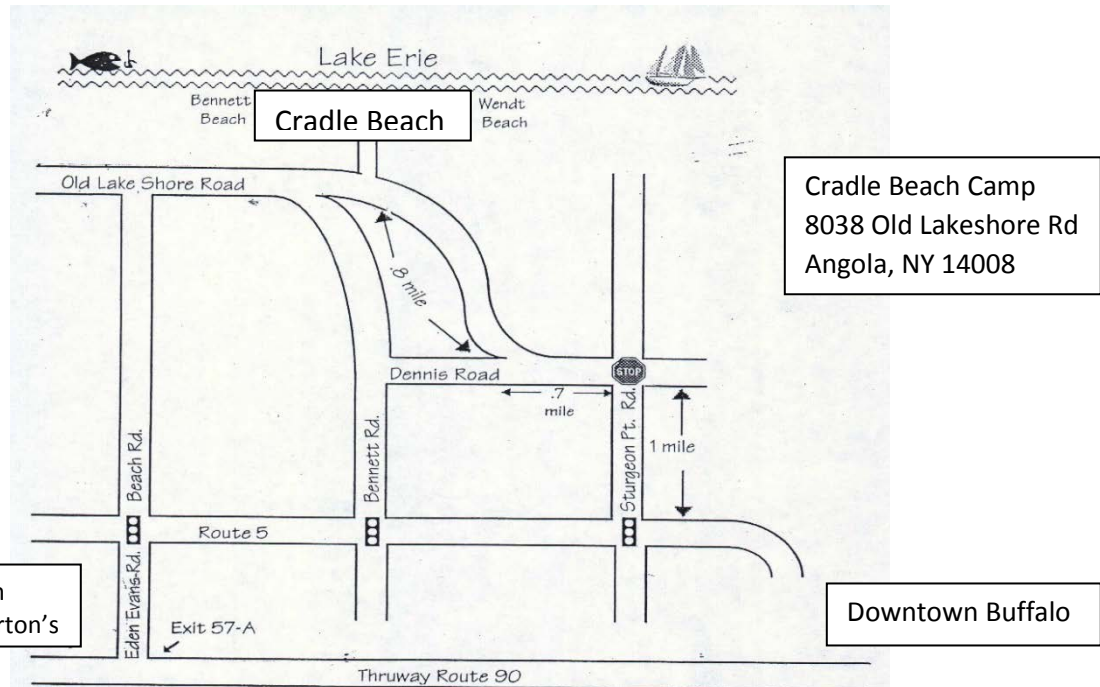
Cradle Beach would like to emphasize some important safety rules with you that can be reviewed with your camper before he comes to the pick-up/drop-off point.

- Make sure you arrive on time
- Ensure a responsible adult takes your child to the check-in point
- It is yours or a responsible adult's responsibility to maintain supervision for your child until they are put in lines for their appropriately assigned bus.
- Explain to your camper the importance of listening to staff directions while he is waiting to be loaded on the buses. Your camper needs to wait in a safe location away from traffic and where he can be seen by the supervising adult. The staff will notify you when it is time to line up for the bus.
- Have ALL your camper's medication pulled out of their luggage to be checked in with our nursing staff. They will review the medications with you before your camper can board the buses.
- Your camper needs to be seated on the bus at all times. It is important to listen to the staff and bus driver for instructions at all on times.

Return:

- PLEASE be on-time!
- Bring Photo Id & your pin number to pick-up checkout line.
- Meds will be returned at pick-up checkout line.

Cradle Beach Car Pick Up / Drop off



Directions

From Downtown Buffalo: Follow Route 5 West, over the Skyway, through Lackawanna towards Dunkirk. Continue on Rt. 5 approximately 10 miles; turn right onto Sturgeon Point Road. Go to Stop sign and turn left towards Wendt Beach; At .7 mile turn right on Lake Shore Rd. Travel .8 mile to Cradle Beach Summer Entrance on the right side of the road; park in the parking lot closest to the red cabins.

From I- 90: Take the Thruway west to exit 57-A (Eden- Angola); Turn right on Eden-Evans Center Rd; Go all the way to the end of the road; crossing through Routes 20 & 5 in the process. The Eden- Evans Center Rd becomes Beach Rd after crossing Route 5; continue on Beach Rd to the stop sign; Turn right onto Old Lakeshore Rd; Continue for 1.5 miles, bearing left at the fork at Bennett Beach; Turn left into Cradle Beach Summer Entrance, 2nd driveway; park in the parking lot closest to the red cabins.

From Silver Creek: Take Rt. 5. Turn left onto Beach Rd (Tim Horton's is on the right). Take Beach Rd all the way to the stop sign; turn right onto Old Lakeshore Rd. Continue on Old Lakeshore Rd for about 1.5 miles. Bear left at the fork at Bennett Beach. Turn left into Cradle Beach Summer Entrance, 2nd driveway; park in the parking lot closest to the red cabins.

Drop Off Time: 9:00 AM

Pick Up Time: 5:00 PM

PLEASE Bring Photo ID & Pin Number to drop off and Pick up.

Drop Off Tips:

- Have your Photo ID & Pin Number available.
- Tables will be setup with signage for you to check in at entrance to the camp area.
- Please have Meds out of the camper's luggage a staff member will escort you from check-in to the Nurses area to review your meds.

Pick-Up Tips:

- Have your Photo ID & Pin Number available.
- A counselor will escort your camper to the table after you have signed them out and collected any meds.